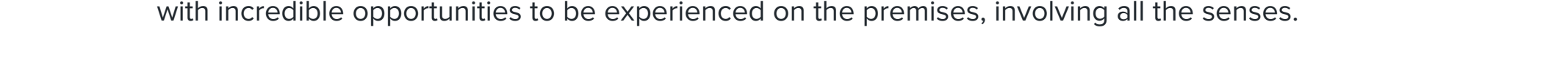


# A treasure of beauties: immerse yourself in the wonder of Bergamo

## Index

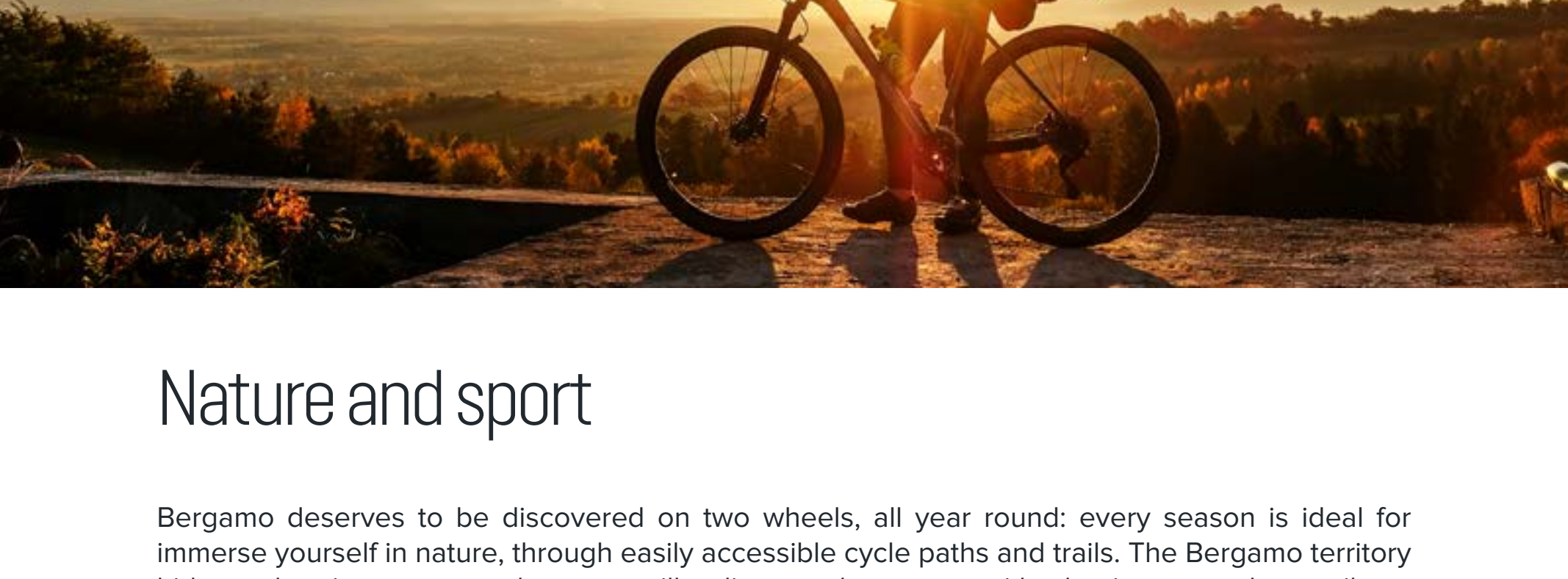
- Life Source Experience
- Nature and sport
- Upper Town: the medieval citadel
- Down Town: shopping district and museum
- Trucca Park and Loreto Park
- Leolandia - Theme Park
- Contact



## Life Source Experience

Located on the doorstep of Bergamo, Life Source welcomes you to enjoy an immersive experience, whether for a long stay or a short stay. Here you will experience endless opportunities: from the Food Experience to the Life Hotel rooms, passing through the Wellness area with SPA and fitness area. A unique place with low environmental impact, whose eco-sustainable commitment is certified Leed Gold, that celebrates nature and allows itself to be inspired, even through the Bergamo area with incredible opportunities to be experienced on the premises, involving all the senses.

Discover the many experiences you can have around Life Source



## Nature and sport

Bergamo deserves to be discovered on two wheels, all year round: every season is ideal for immerse yourself in nature, through easily accessible cycle paths and trails. The Bergamo territory hides authentic treasures, where you will rediscover the contact with what is pure and unspoiled. And thanks to our pedal-assisted e-bikes, fatigue will be only a distant memory. Book your e-bikes at reception and ask for more information about our guides.

### Dive into Bergamo's green

*Itinerary Parco dei Colli, Santuari e Città Alta*

- Length of route: 30 km
- Route difficulty: low

• A tour in the green soul of Bergamo, through Parco dei Colli. Starting from Life Source, you will be immerse in Astino Valley surrounded by nature where you can discover its former Monastery. After that you'll take the road that leads to San Vigilio's Castel, the most panoramic point of the Orobic hills. Here begins the downhill towards Città Alta and its historic Venetian Walls and after that starts the path of Morla Greenway, which leads you to the vault of uncontaminated nature up to the cycle path of Val Brembana with a stop at the Sanctuary of Sombreno. The itinerary continues to discover Madonna della Castagna to finally reach Life Source.

### Bergamo All-around

*Itinerary Valle D'Astino e Città Alta*

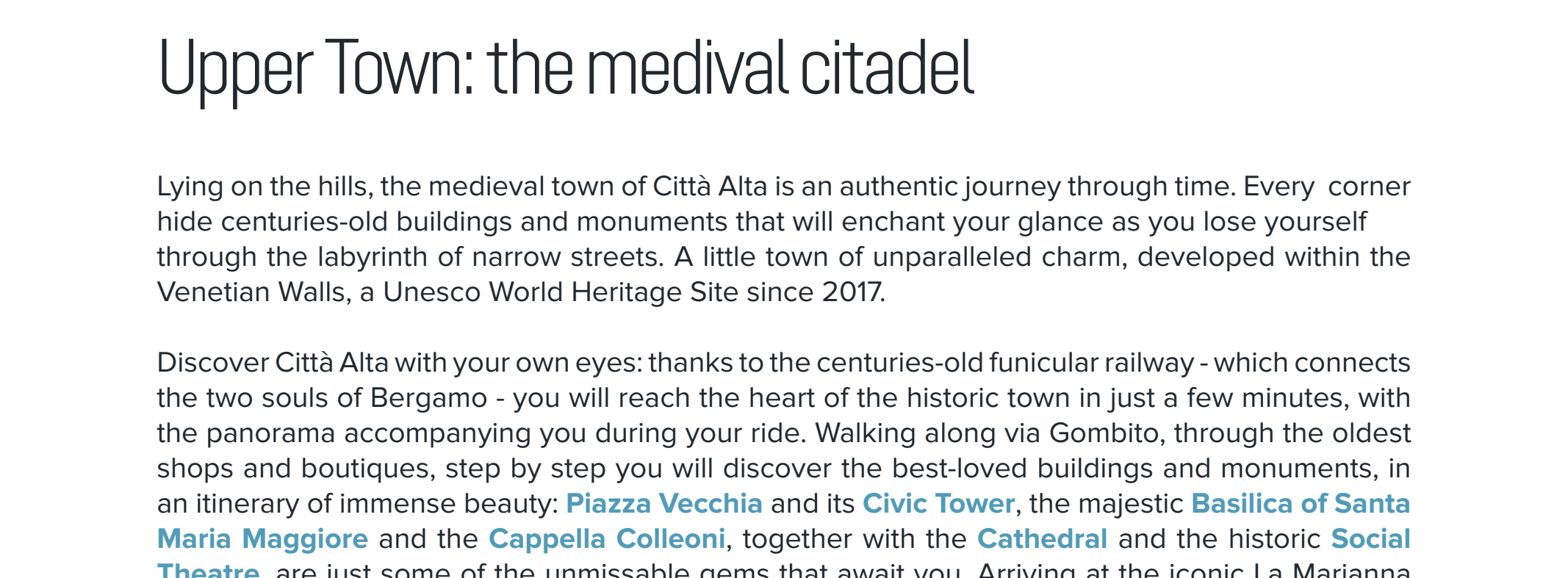
- Length of route: 14 km
- Route difficulty: low

• The best of the Orobic city, in a pleasant and evocative cycling route. Riding your e-bike, you start from Life Source to immerse yourself in the green of the Parco dei Colli, with the spectacle of the hillsides that will surprise your eyes. Going up the trail, you reach Città Alta, where you will ride through the historical sights of its medieval citadel.

With the splendid view of the city, finally, you can start the downhill through all the walls until you immerse yourself in nature towards Life Source.

[Download the map here](#)

[Download the map here](#)



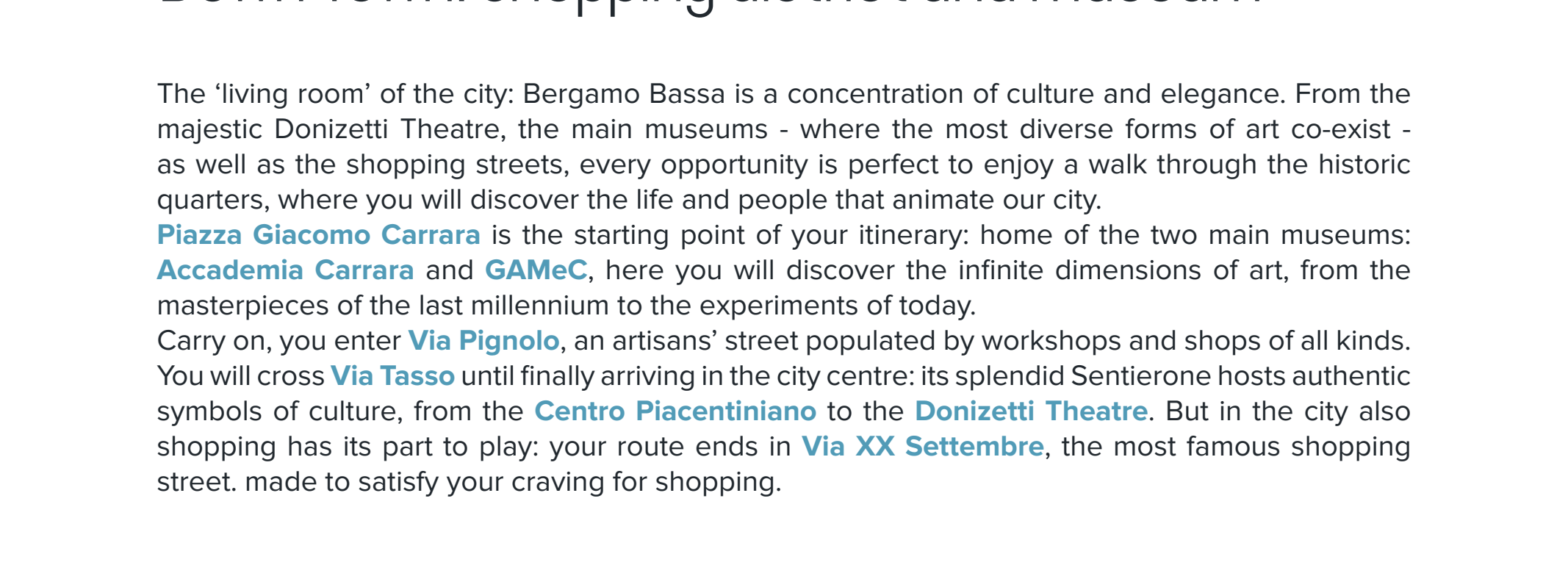
## Upper Town: the medieval citadel

Lying on the hills, the medieval town of Città Alta is an authentic journey through time. Every corner hide centuries-old buildings and monuments that will enchant your glance as you lose yourself through the labyrinth of narrow streets. A little town of unparalleled charm, developed within the Venetian Walls, a Unesco World Heritage Site since 2017.

Discover Città Alta with your own eyes: thanks to the centuries-old funicular railway - which connects the two souls of Bergamo - you will reach the heart of the historic town in just a few minutes, with the panorama accompanying you during your ride. Walking along via Gombito, through the oldest shops and boutiques, step by step you will discover the best-loved buildings and monuments, in an itinerary of immense beauty: [Piazza Vecchia](#) and its [Civic Tower](#), the majestic [Basilica of Santa Maria Maggiore](#) and the [Cappella Colleoni](#), together with the [Cathedral](#) and the historic [Social Theatre](#), are just some of the unmissable gems that await you. Arriving at the iconic La Marianna ice-cream shop, where you can enjoy a delicious Straciatella ice-cream, your descent from the Venetian Walls begins, with a splendid landscape on the territory that will enchant you.



[Map available at Life Source reception](#)



## Down Town: shopping district and museum

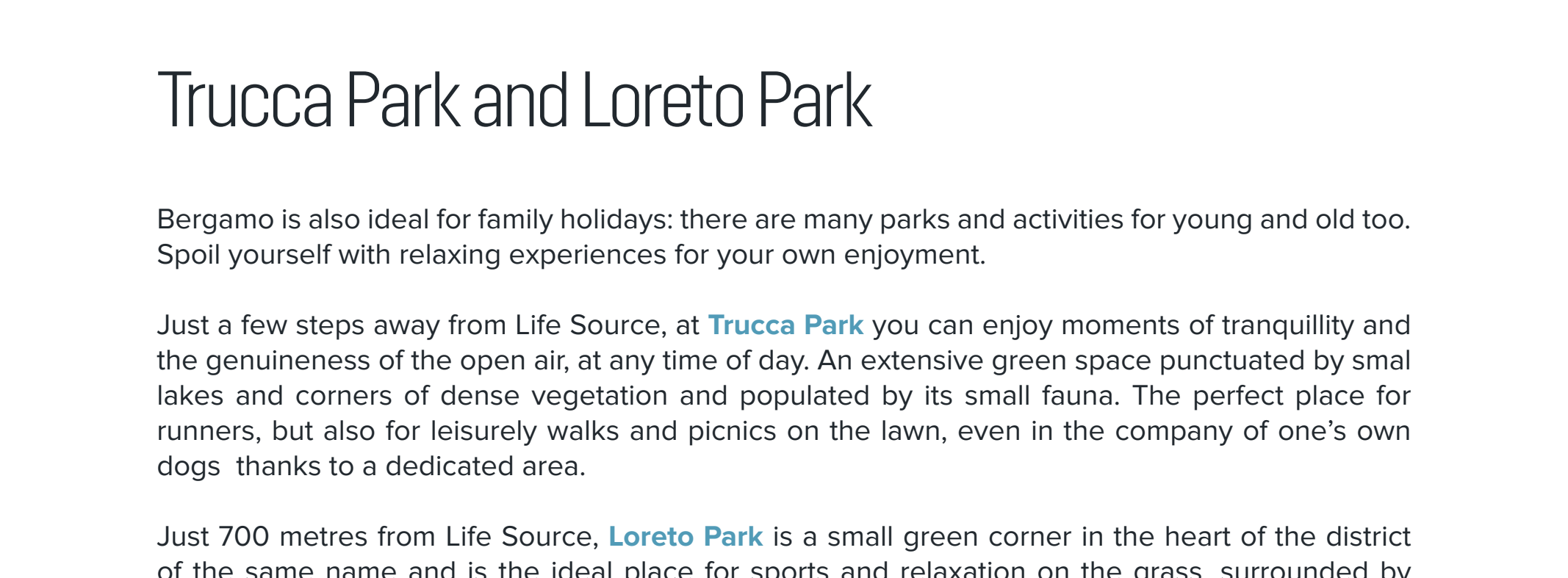
The 'living room' of the city: Bergamo Bassa is a concentration of culture and elegance. From the majestic Donizetti Theatre, the main museums - where the most diverse forms of art co-exist - as well as the shopping streets, every opportunity is perfect to enjoy a walk through the historic quarters, where you will discover the life and people that animate our city.

[Piazza Giacomo Carrara](#) is the starting point of your itinerary: home of the two main museums: [Accademia Carrara](#) and [GAMeC](#), here you will discover the infinite dimensions of art, from the masterpieces of the last millennium to the experiments of today.

Carry on, you enter [Via Tasso](#), an artisans' street populated by workshops and shops of all kinds. You will cross [Via Tasso](#) until finally arriving in the city centre: its splendid Sentierone hosts authentic symbols of culture, from the [Centro Piacentiniano](#) to the [Donizetti Theatre](#). But in the city also shopping has its part to play: your route ends in [Via XX Settembre](#), the most famous shopping street, made to satisfy your craving for shopping.



[Map available at Life Source reception](#)

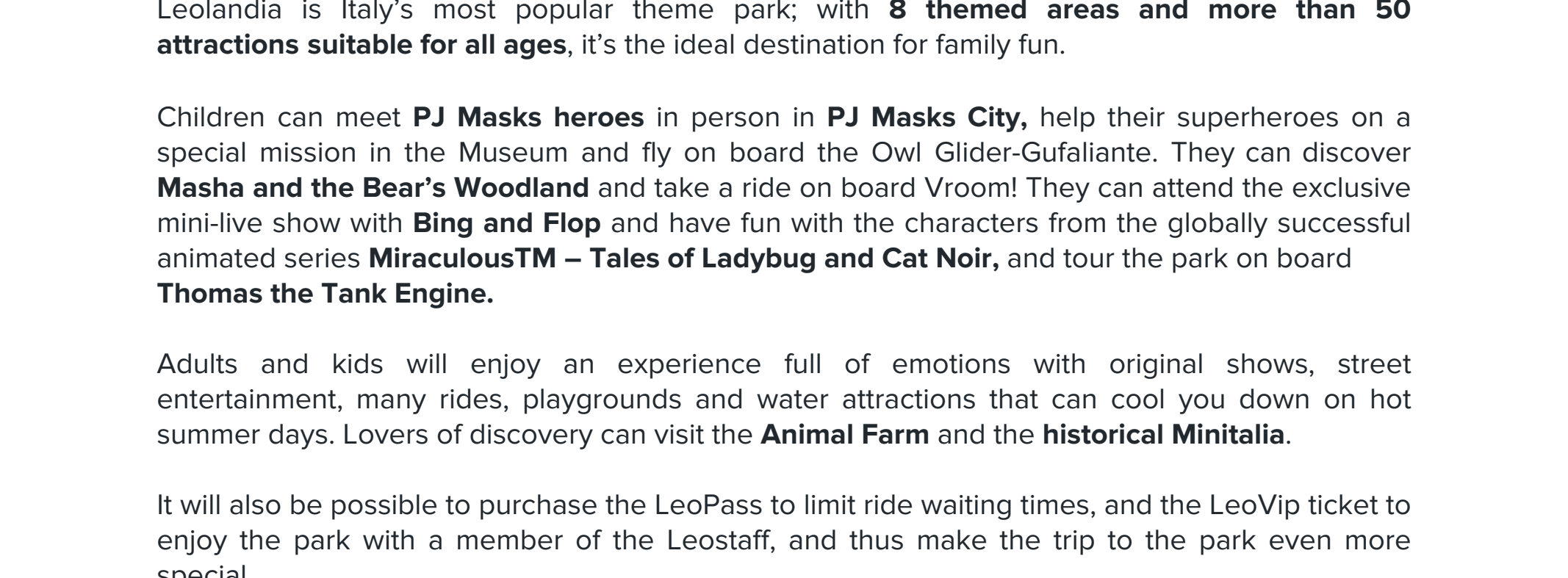


## Trucca Park and Loreto Park

Bergamo is also ideal for family holidays: there are many parks and activities for young and old too. Spoil yourself with relaxing experiences for your own enjoyment.

Just a few steps away from Life Source, at [Trucca Park](#) you can enjoy moments of tranquillity and the genuineness of the open air, at any time of day. An extensive green space punctuated by small lakes and corners of dense vegetation and populated by its small fauna. The perfect place for runners, but also for leisurely walks and picnics on the lawn, even in the company of one's own dogs thanks to a dedicated area.

Just 700 metres from Life Source, [Loreto Park](#) is a small green corner in the heart of the district of the same name and is the ideal place for sports and relaxation on the grass, surrounded by flourishing trees. Easily reached on foot, it is suitable for those who enjoy a family stay, with a large children's area and spaces for picnics. It periodically hosts initiatives, educational workshops and open-air events of all kinds.



## Leolandia - Theme Park

Leolandia is Italy's most popular theme park; with **8 themed areas and more than 50 attractions suitable for all ages**, it's the ideal destination for family fun.

Children can meet **PJ Masks heroes** in person in **PJ Masks City**, help their superheroes on a special mission in the Museum and fly on board the Owl Glider-Gufallante. They can discover **Masha and the Bear's Woodland** and take a ride on board Vroom! They can attend the exclusive mini-live show with **Bing and Flop** and have fun with the characters from the globally successful animated series **MiraculousTM – Tales of Ladybug and Cat Noir**, and tour the park on board **Thomas the Tank Engine**.

Adults and kids will enjoy an experience full of emotions with original shows, street entertainment, many rides, playgrounds and water attractions that can cool you down on hot summer days. Lovers of discovery can visit the **Animal Farm** and the **historical Minitalia**.

It will also be possible to purchase the LeoPass to limit ride waiting times, and the LeoVIP ticket to enjoy the park with a member of the LeoStaff, and thus make the trip to the park even more special.